

Fuel Pump Controller into RS Installation Guide

This guide is specifically for 98-01 Impreza and Forester. For other models please use this as a guide for the process, but refer to the specific diagram iWire has supplied for the location of the wire that needs to be connected.

The fuel pump controller is located on the passenger's side under the dash and will have an iWire sticker with a swap number on it. The fuel pump controller's job is to regulate the ground side of the fuel pump for 3 different settings, low, medium, and high depending how much fuel the engine needs. The White wire is this ground wire and we need to get it connected to the fuel pump.

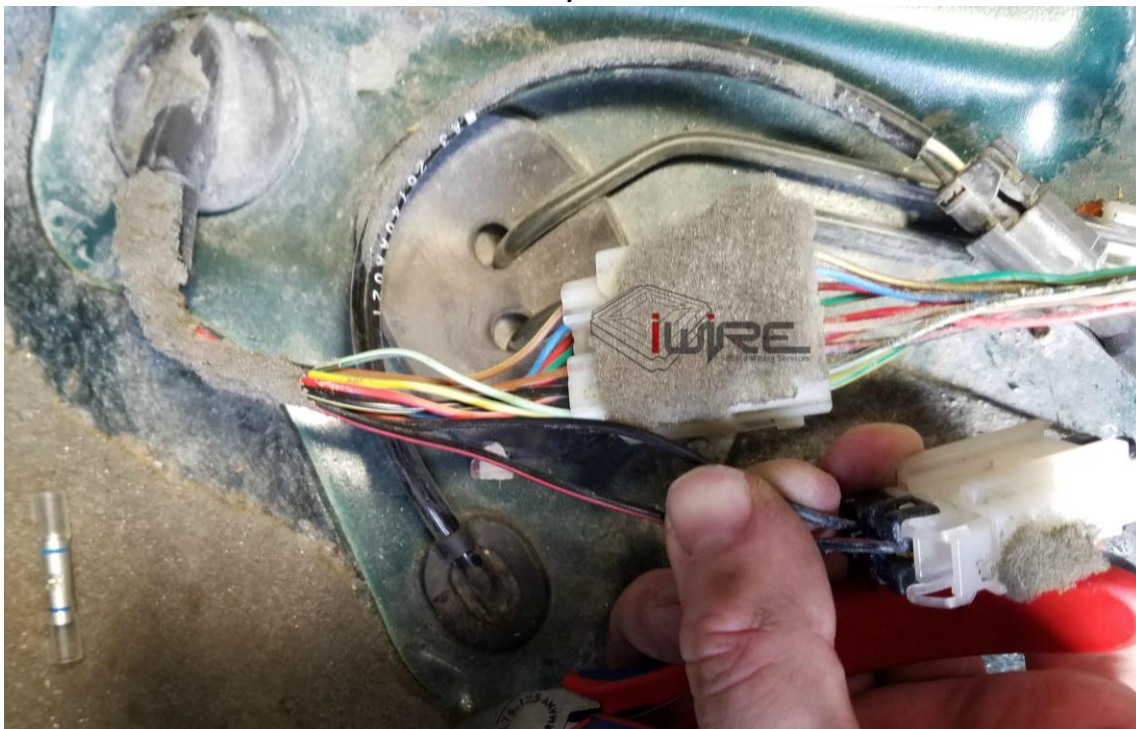


Fuel Pump Controller into RS Installation Guide

1. First take the White wire to the backseat by running it under the carpet along the door. There you will find 2 plugs, 1 with 2 pins, the other with 12 pins.

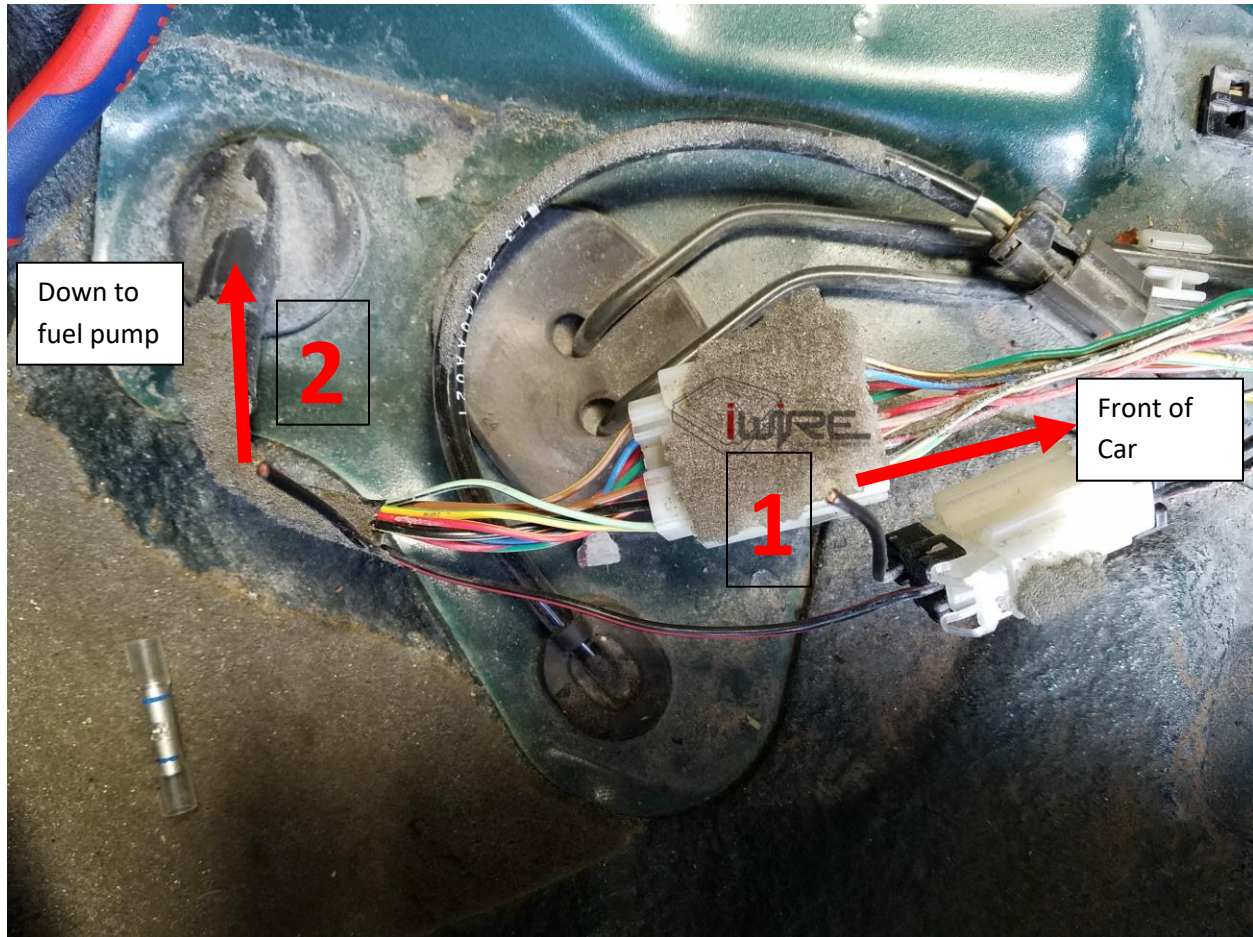


2. Ignore the 12 pin connector, we are going to focus on the 2 pin connector. There is a Black/Red wire and a solid Black wire. **DO NOT CUT THE BLACK/RED WIRE.**



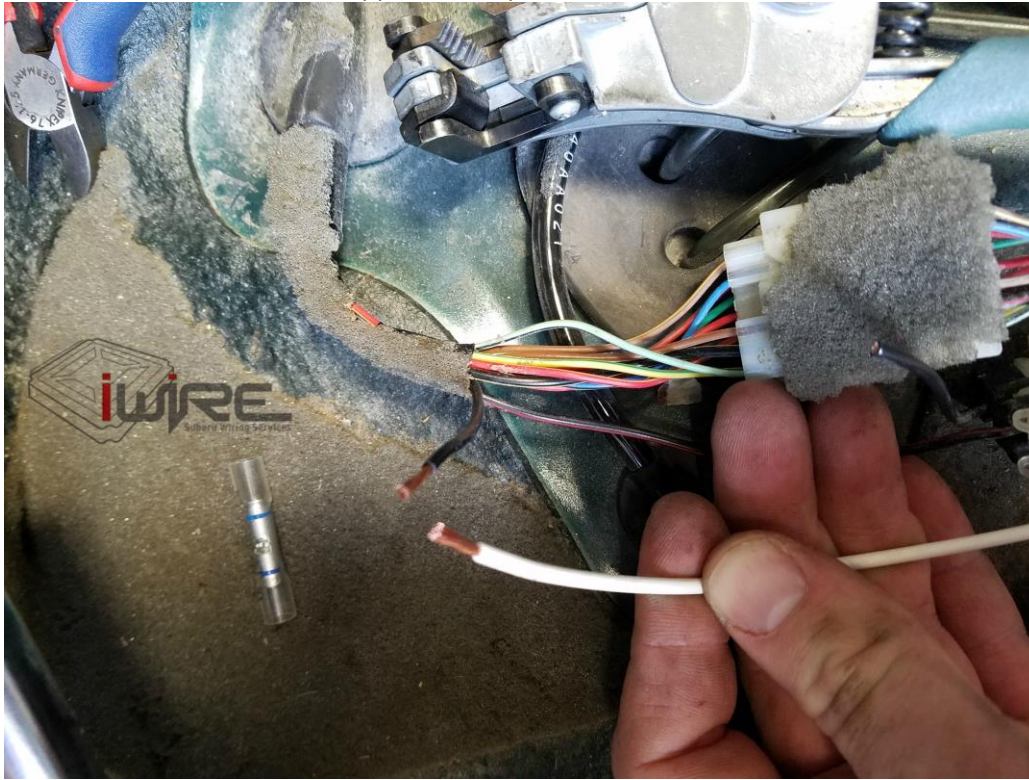
Fuel Pump Controller into RS Installation Guide

3. Cut the solid Black wire so you are left with 2 ends.
 1. One of the ends will go toward the front of the car under the carpet, leave this empty. It ends at ring terminal that bolts to the car under the seat so there will be no concern of it touching something and causing an issue.
 2. The other end goes into a small grommet on the floor that heads to underside of the car and then to the gas tank. This is the wire we are going to connect the White wire to.

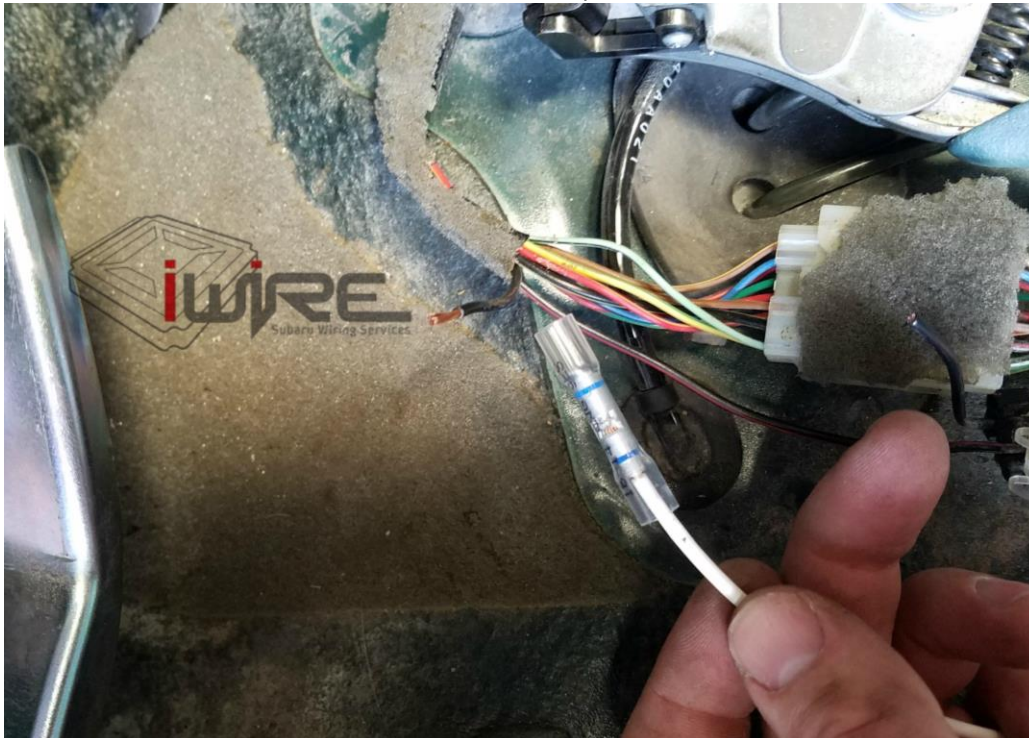


Fuel Pump Controller into RS Installation Guide

4. Strip each end of the wire approximately ½ inch.



5. Insert the White wire into one end of the crimp.



Fuel Pump Controller into RS Installation Guide

6. Take a set of pliers or crimpers to compress the metal on the Blue line.

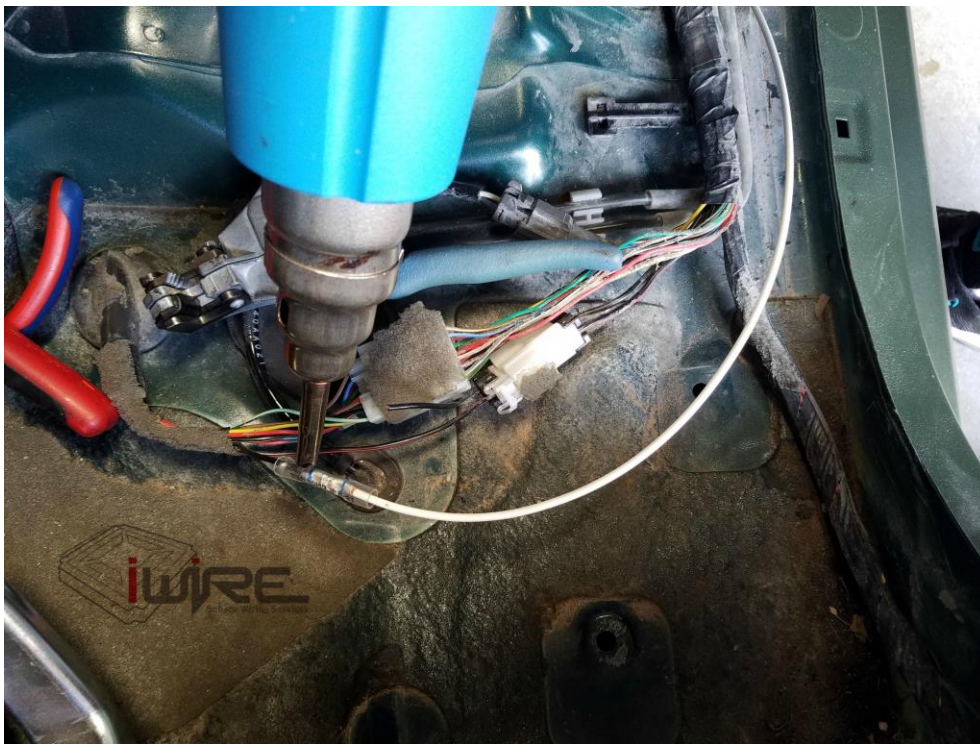
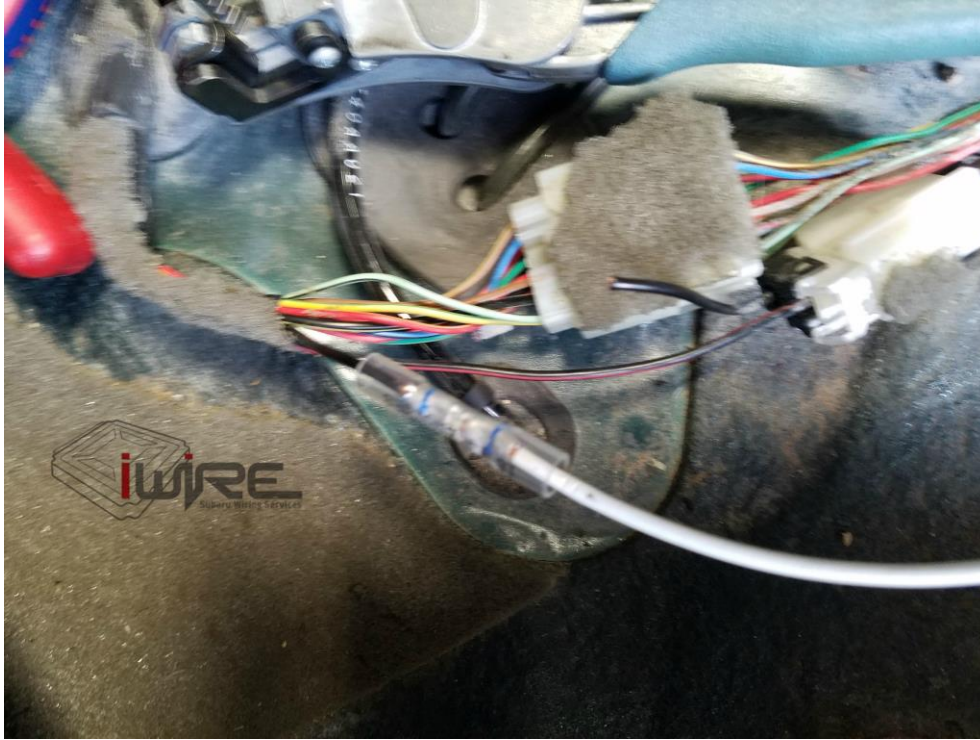


7. Crimp the Black wire to the other side.



Fuel Pump Controller into RS Installation Guide

8. Heat the shrink tube with a heat gun (a lighter would do) until fully shrunk and a little bit of glue comes out of each end.



Fuel Pump Controller into RS Installation Guide

9. To confirm the installation is correct when the key is turned to the on position (assuming the ECU is in and working) the fuel pump will run for a few seconds and then stop.

If the fuel pump continues to run without stopping verify the White wire was not pinched in the seat or door along the way from the front to the back and that the cut Black wire that goes back into the front of the car is not connected with the other 2. It should be a 1 to 1 connection, not 2 into 1.

If the pump does not prime make sure the ECU is on by verifying there is a Check Engine light on the dash. Assuming the ECU is on and working then make sure the White wire is not connected to the Black wire on the side going back to the front of the car.

