

## **iWire Fuel Pump Hardwire Kit Installation Guide for Radium Hanger 2 Pump in 93-07 Subaru**

This install guide is an additional instruction guide to our standard Fuel Pump Hardwire Kit. This guide picks up after page 27 of the standard install guide for 1993 to 2007 Models.

**PLEASE NOTE: This kit is designed to modify the electrical and fuel systems in your Subaru. Working around electricity and fuel vapors can be dangerous and even deadly if proper care is not taken. While iWire takes pride in making our products as simple as possible to use, we still recommend that a professional, qualified technician perform the installation. Any modification to a vehicle that exceeds the original manufacturer specifications (which includes OEM fuel tank connections) carries an inherent risk of mechanical failure that could result in damage to life or property. iWire is not responsible for any damages that may occur. By purchasing this product, you agree to these terms of sale.**

The fuel pump power and ground wires should be removed from the stock connector and capped as described in the main guide. You can route the additional power and ground wires (Grey and Black) for the secondary pump in the same way as the primary pump wires (Black and White).

Plug matching Grey 6 Pin jumper into the stock harness and attach ring terminals to Radium Hanger.

White – Pump 1 Positive

Blue – Pump 1 Negative

Grey – Pump 2 Positive

Black (small harness with ring terminal) – Pump 2 Negative

6 pin Grey Jumper harness – Note Positive and negative do not matter

- Fuel Level -> Light Blue and Black with White Stripe
- Fuel Temperature -> Blue with Black Stripe and Red with White Stripe
-

## iWire Fuel Pump Hardwire Kit Installation Guide for Radium Hanger 2 Pump in 93-07 Subaru

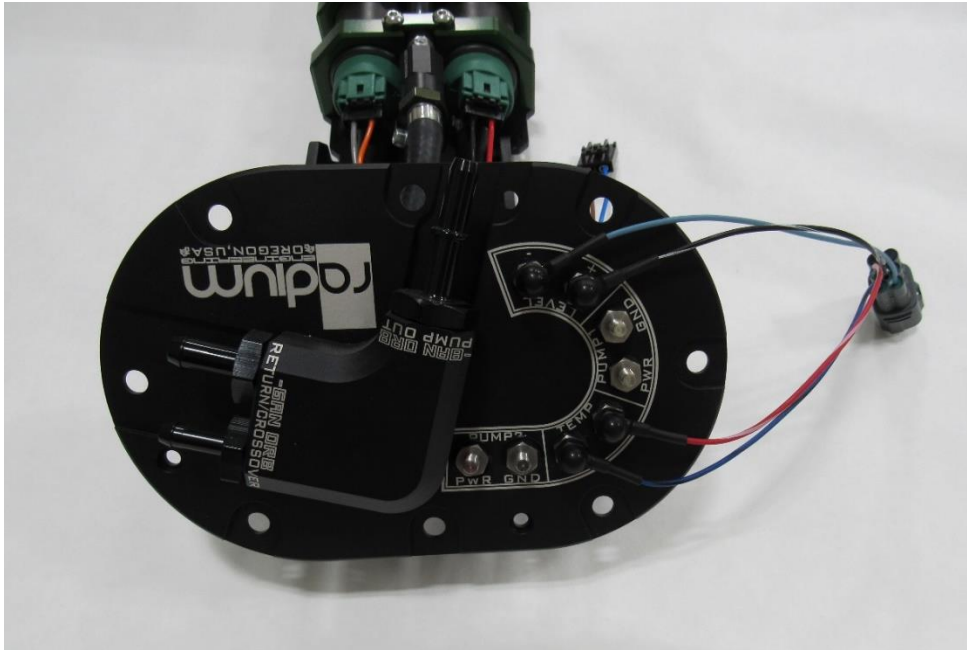
### What's Included

1. Radium Pressure Switch Connector (Pressure Switch not supplied with kit)
2. Secondary Pump Relay
3. Grey Second Pump Power Wire
4. White connector with Orange Wire to tie into single pump harness
5. Black Ground wire for Secondary Pump
6. Fuel Tank Stock Connector Jumper

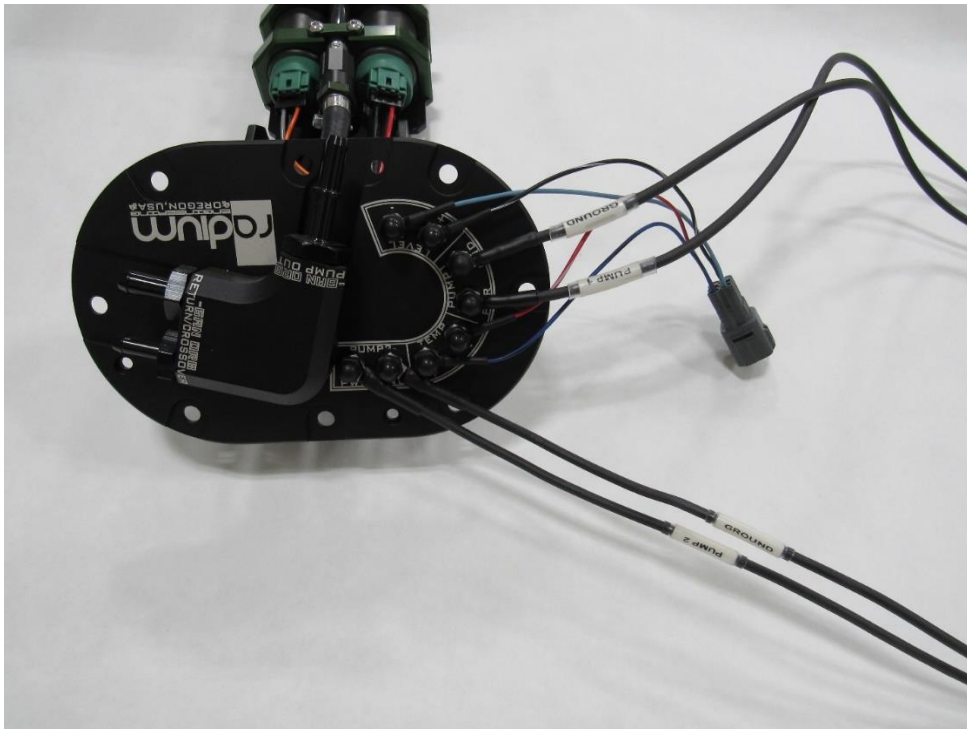


## iWire Fuel Pump Hardwire Kit Installation Guide for Radium Hanger 2 Pump in 93-07 Subaru

Secure the ring terminals from the supplied fuel tank jumper to the corresponding studs on the Radium hanger. Fuel Level and Fuel Temp wires connected.



Power and Ground Wires Connected



## iWire Fuel Pump Hardwire Kit Installation Guide for Radium Hanger 2 Pump in 93-07 Subaru

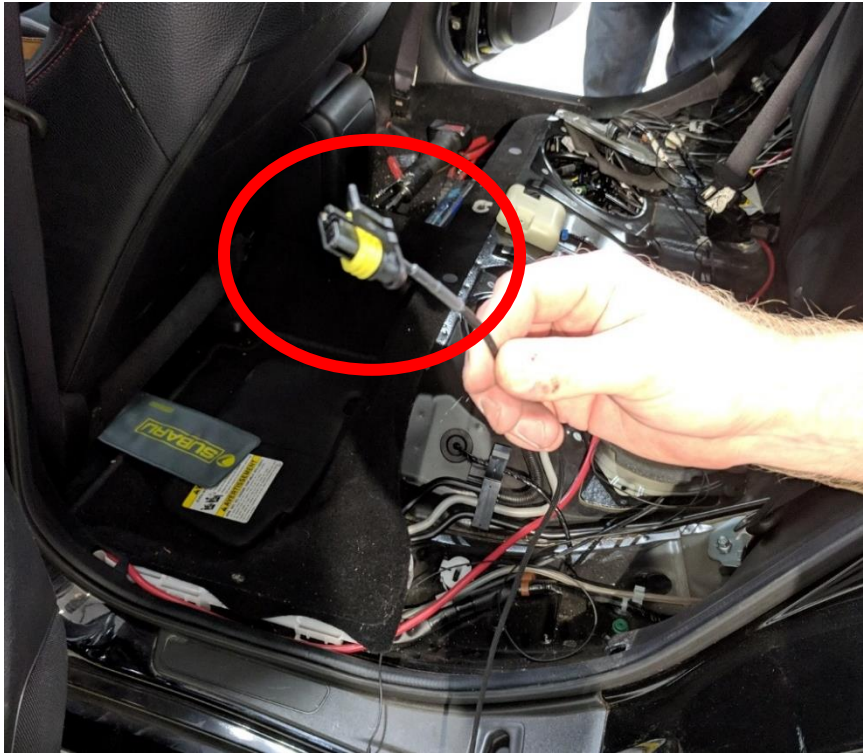
Attach Black ground wire terminal for secondary pump to the crash bar



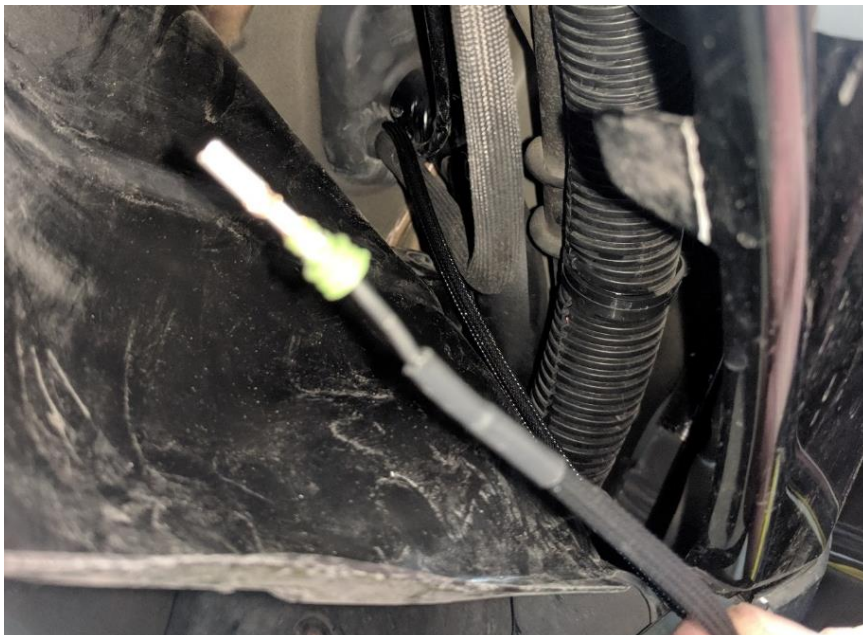


## iWire Fuel Pump Hardwire Kit Installation Guide for Radium Hanger 2 Pump in 93-07 Subaru

Hopefully the wire for the secondary pump pressure switch was run at the same time as the battery cable. If not, no worries it can run parallel with the battery cable into the engine bay.

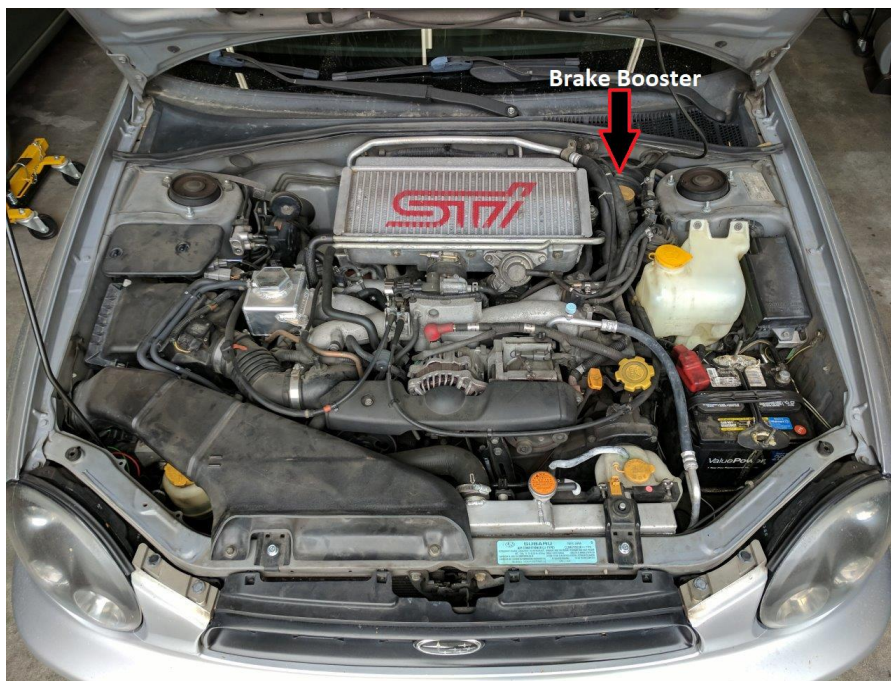


It's best to depin the terminal from the housing. It's the same process as the fuel tank connector.



## iWire Fuel Pump Hardwire Kit Installation Guide for Radium Hanger 2 Pump in 93-07 Subaru

Radium pressure switch connector coming from the same place as the battery cable in the engine bay.



## iWire Fuel Pump Hardwire Kit Installation Guide for Radium Hanger 2 Pump in 93-07 Subaru

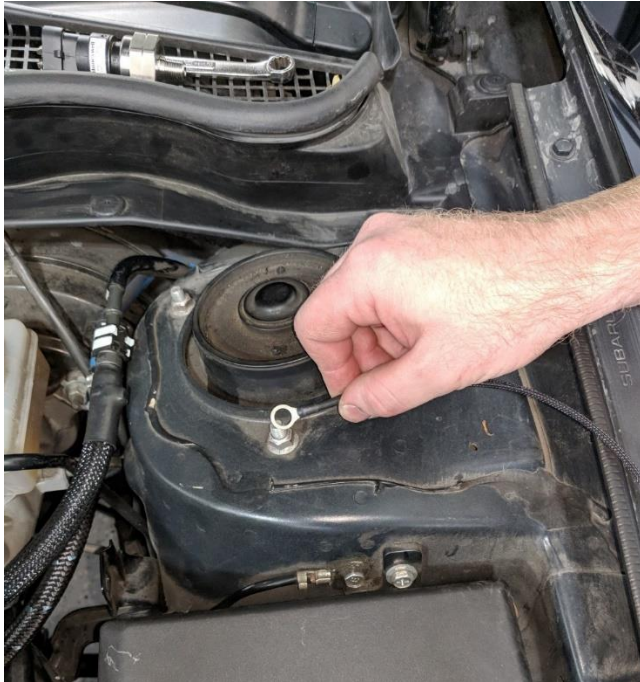
Ground wire for Radium Pressure Switch connector.





## iWire Fuel Pump Hardwire Kit Installation Guide for Radium Hanger 2 Pump in 93-07 Subaru

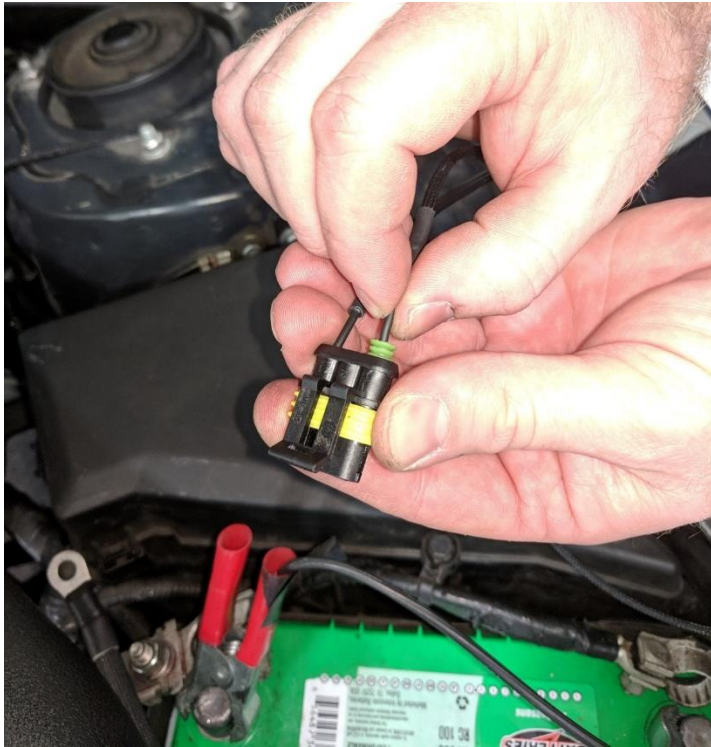
Ground the ring terminal to a solid metal location like the strut tower bolt.



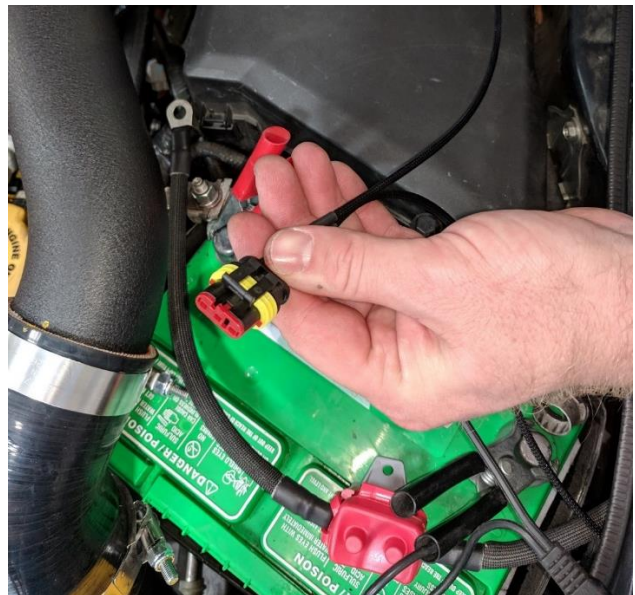


## iWire Fuel Pump Hardwire Kit Installation Guide for Radium Hanger 2 Pump in 93-07 Subaru

Insert wire from cable you ran from the rear of your car into the empty slot on the Radium Pressure Switch connector.



Insert Red lock into Radium Pressure Switch connector.



## iWire Fuel Pump Hardwire Kit Installation Guide for Radium Hanger 2 Pump in 93-07 Subaru

Plug connector into the Radium Pressure Switch Sensor. Install the Radium Pressure Switch Sensor in the engine bay following Radium's instructions.



You've completed the Radium second pump addition wiring in your car. Please return to where you left off in the standard iWire Fuel Pump Hardwire Kit install instructions to finish your installation. If you have any questions during your install, please don't hesitate to contact us.